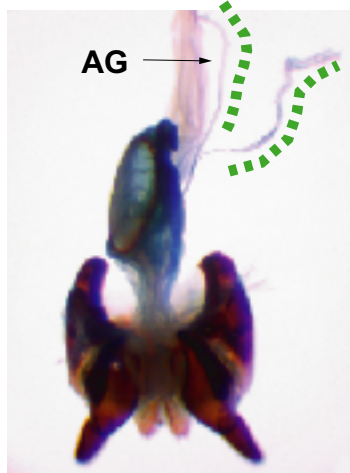


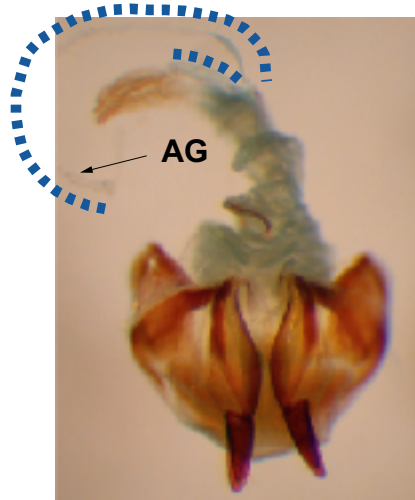
Web appendix 14. Character 66



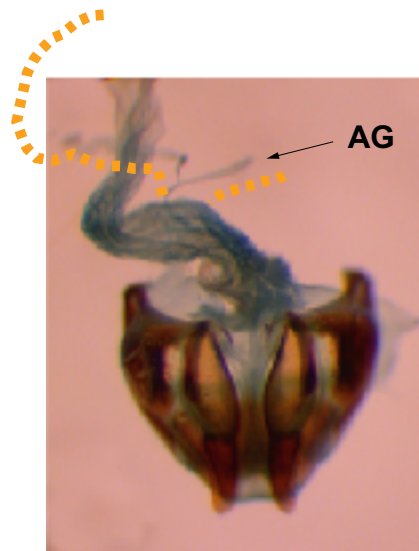
**66 Accessory gland (AG)**  
0 = long, narrow, length approx. equal to length of spermatheca



**66 Accessory gland (AG)**  
1 = medium, length approx. equal to half the length of spermatheca



**66 Accessory gland (AG)**  
2 = super-long, narrow, length approx. equal to 8-10x length of spermatheca



**66 Accessory gland (AG)**  
2 = short, length approx. equal to 0.10x the length of spermatheca